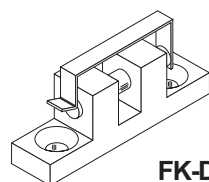
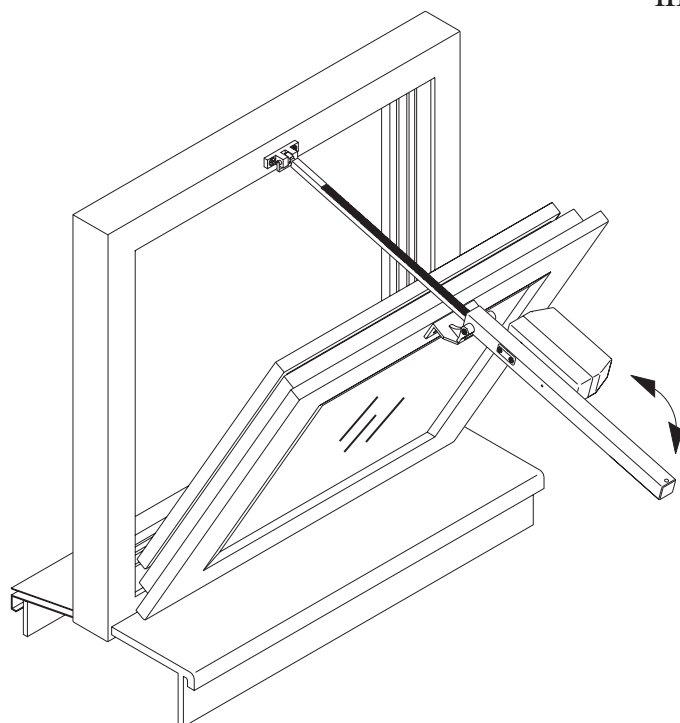
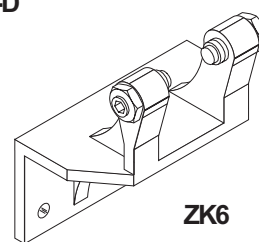


Rack and Pinion Drives on a Pivot-Hung Window, opening inward

in connection with brackets ZK6 and FK-D



FK-D



ZK6

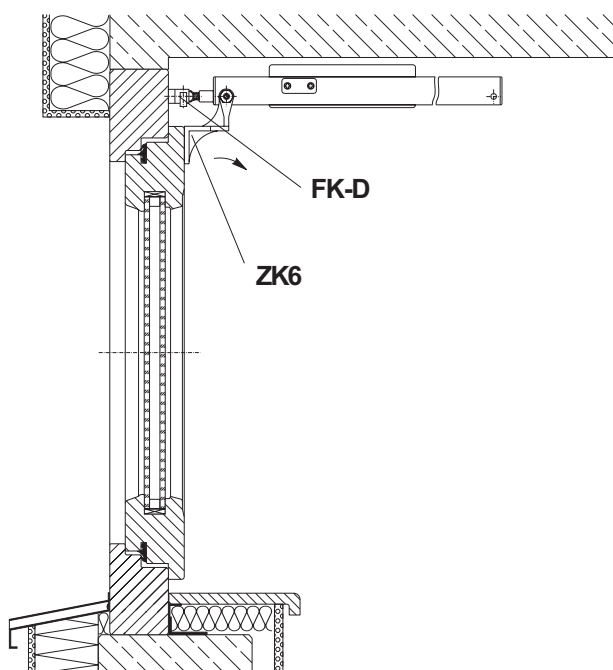


Observe
slewing range

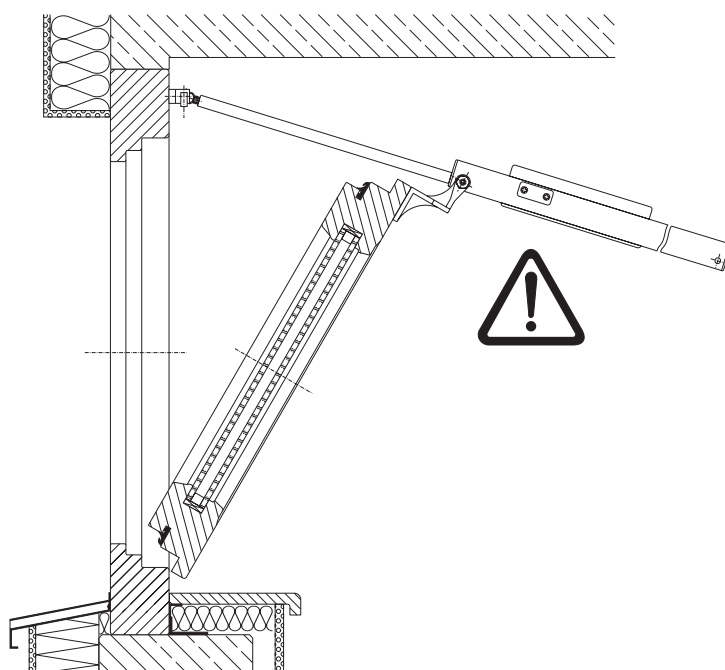
Attention

Observe weight of window wing including glass!
(Glass of 1mm strength has a weight of 2,5kg/m²)

Pivot-hung window closed

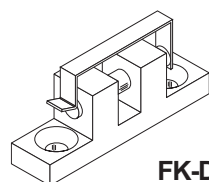
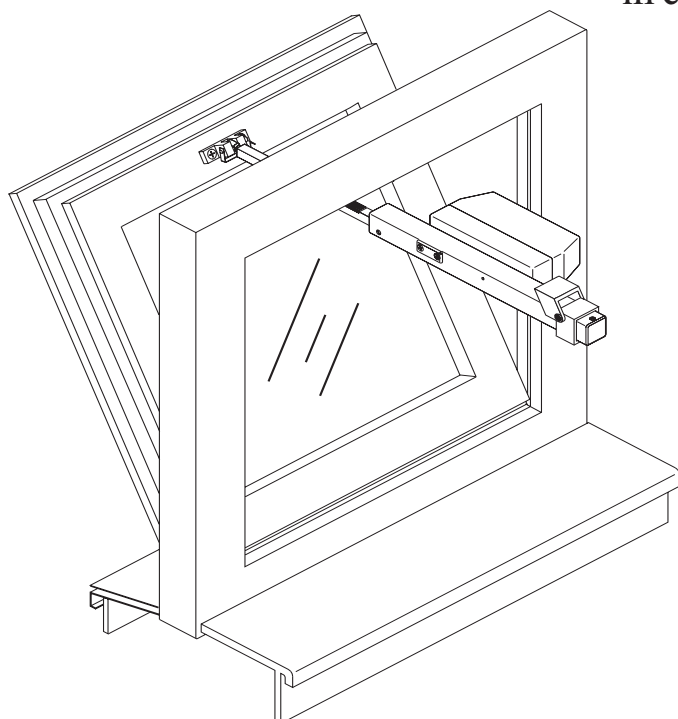


Pivot-hung window open



Rack and Pinion Drives on a Pivot-Hung Window, opening outward

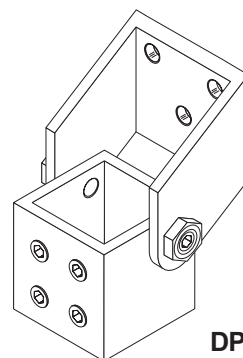
in connection with brackets DPK6 and FK-D



FK-D



Observe
slewing range

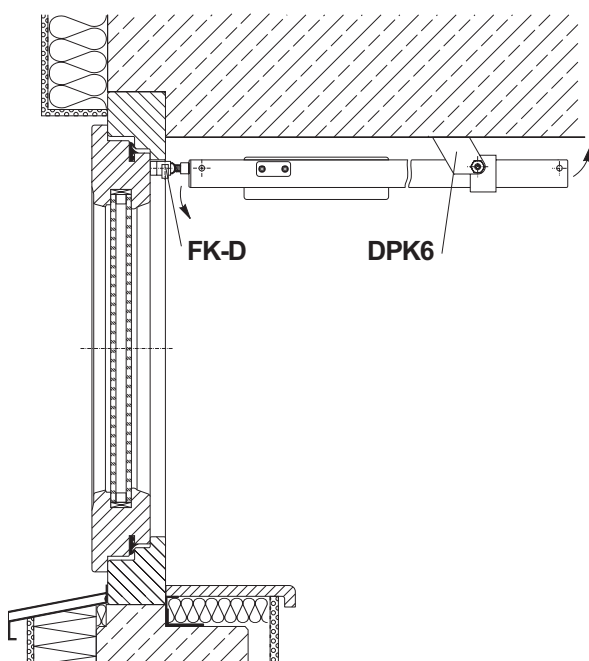


DPK6

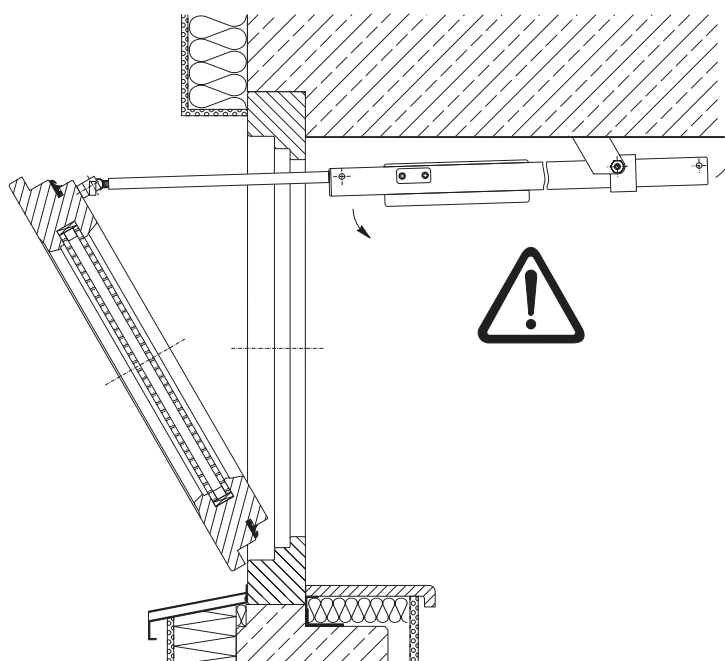
Attention

- Observe weight of window wing including glass!
(Glass of 1mm strength has a weight of 2,5kg/m²)

Pivot-hung window, closed

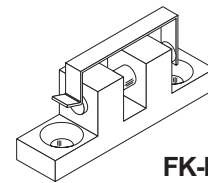
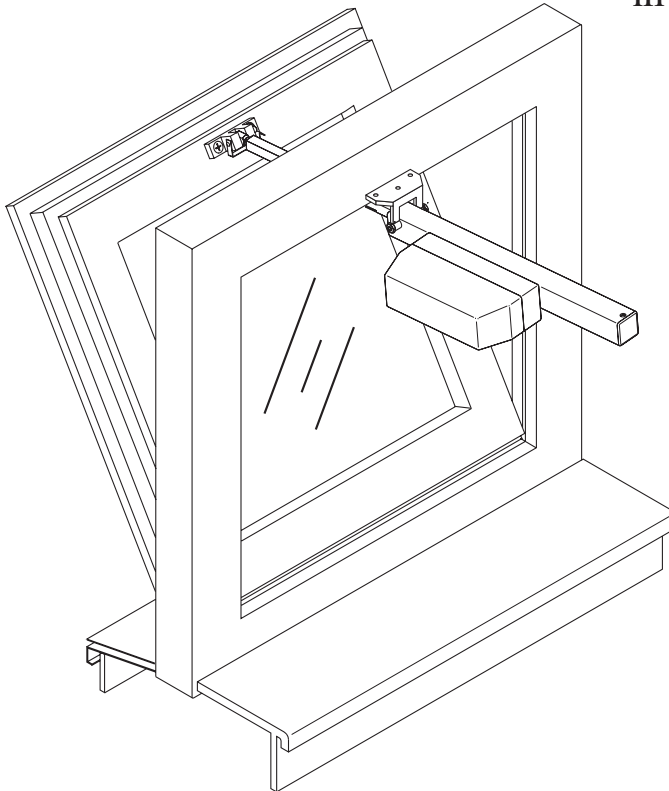


Pivot-hung window, open

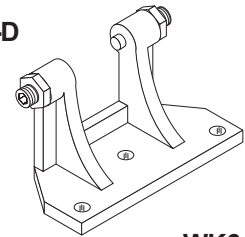


Rack and Pinion Drive on a Pivot-Hung Window, opening outward

in connection with brackets WK6 and FK-D



FK-D



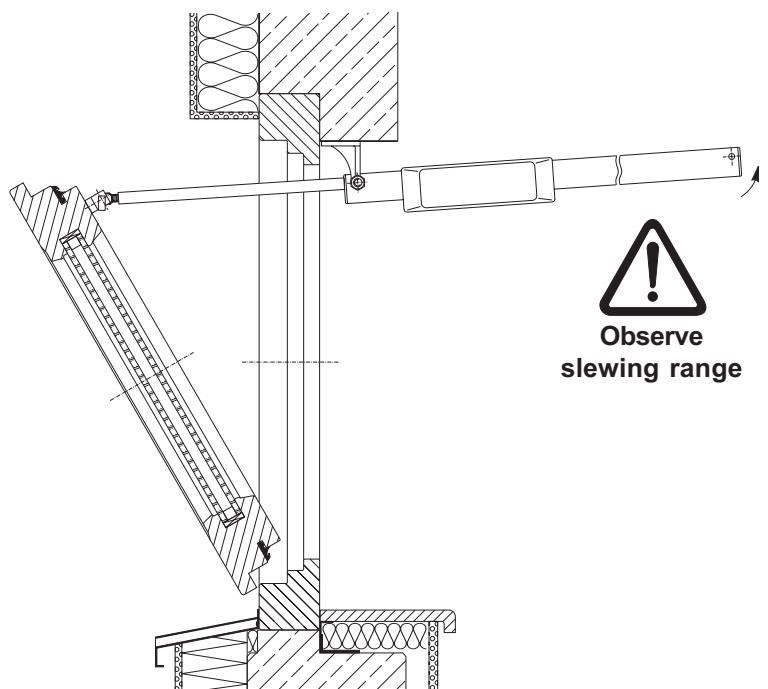
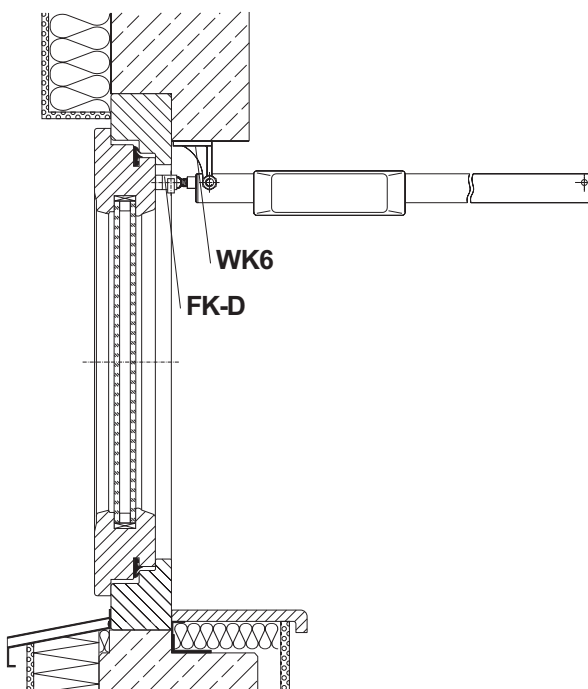
WK6

Attention

Observe weight of window wing including glass!
(Glass of 1mm strength has a weight of 2,5kg/m²)

Pivot-hung window closed

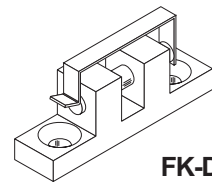
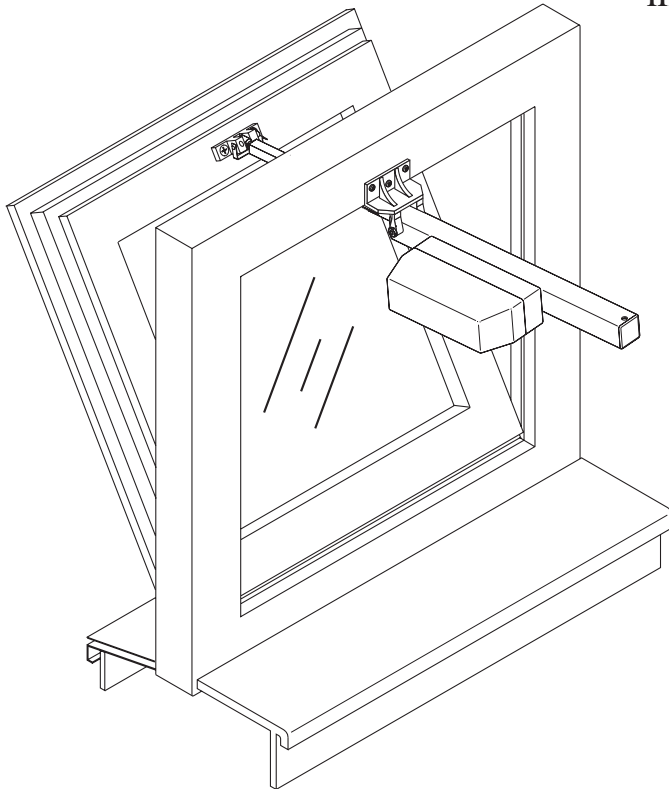
Pivot-hung window open



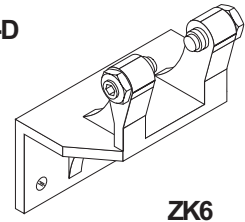
Observe
slewing range

Rack and Pinion Drive on a Pivot-Hung Window, opening outward

in connection with brackets ZK6 and FK-D



FK-D

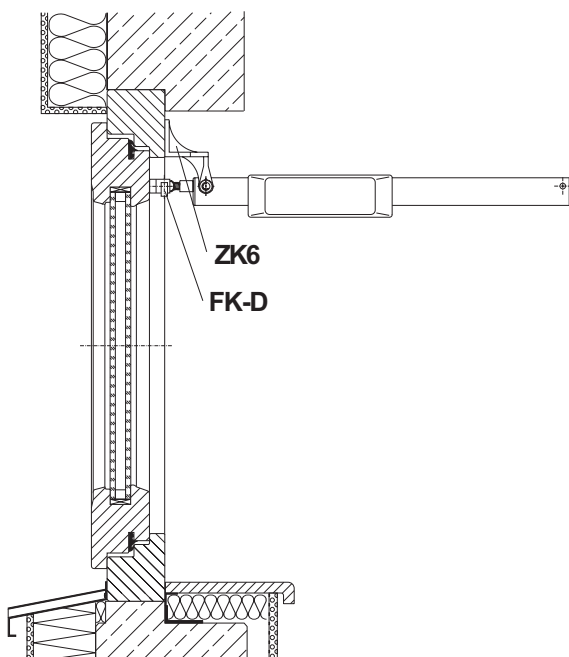


ZK6

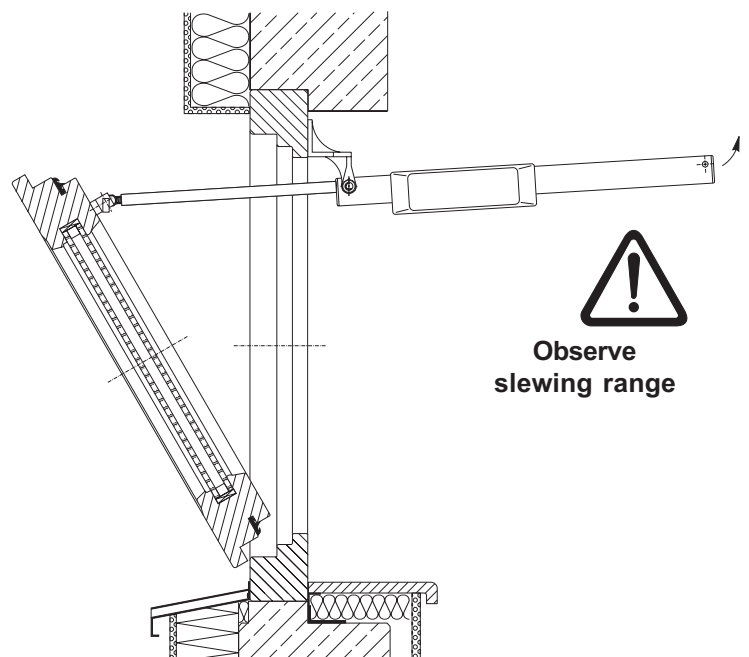
Attention

Observe weight of window wing including glass!
(Glass of 1mm strength has a weight of 2,5kg/m²)

Pivot-hung window closed



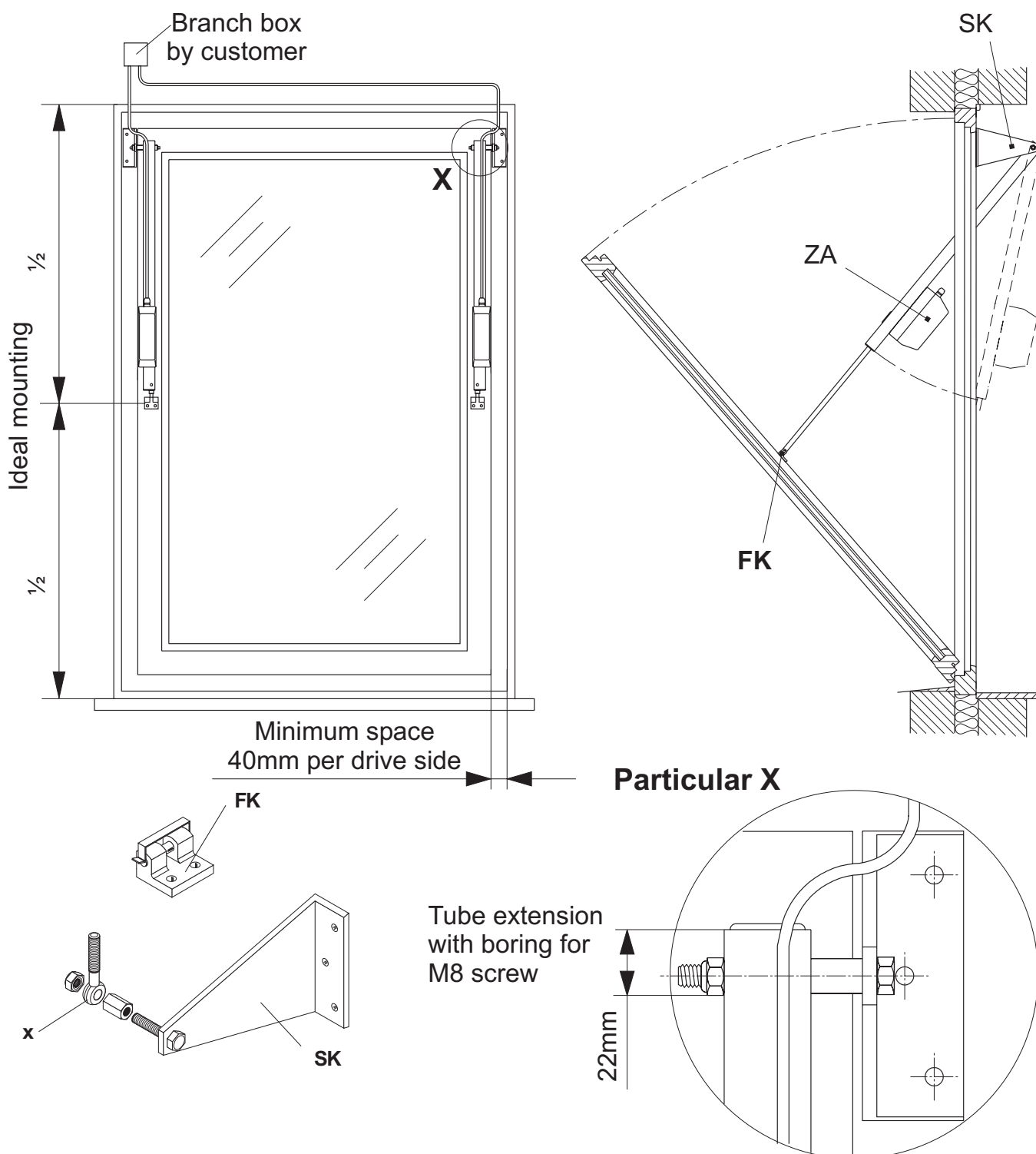
Pivot-hung window open



Observe
slewing range

Rack and Pinion Drive on a Pivot-Hung Window, opening outward

in connection with brackets SK und FK

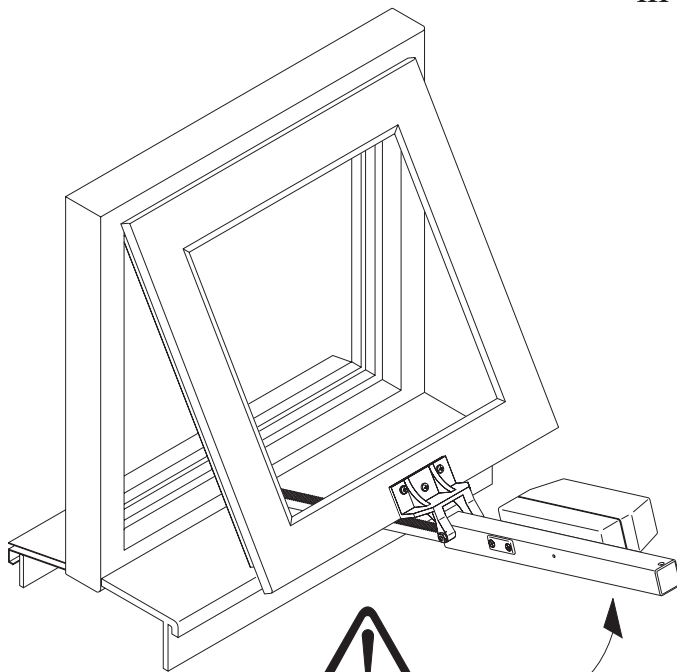


Attention

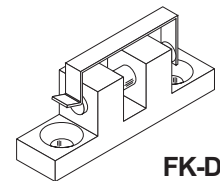
- We recommend to set in synchronized drives (Option „-BSY“).
- Please take care, that nobody can be injured in case of broken glass.
- In this example, locking pressure is only about 10% of motive power! Locking pressure can be increased by shifting of the window wing bracket to the opposite side of the hinge.
- The eye bolt (x) is not required for this mounting!

Rack and Pinion Drives on a Top-Hung Sash, opening inward

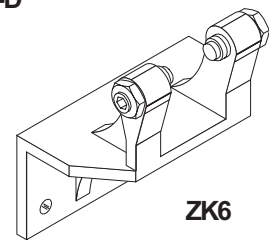
in conjunction with brackets ZK6 and FK-D




Observe
slewing range



FK-D



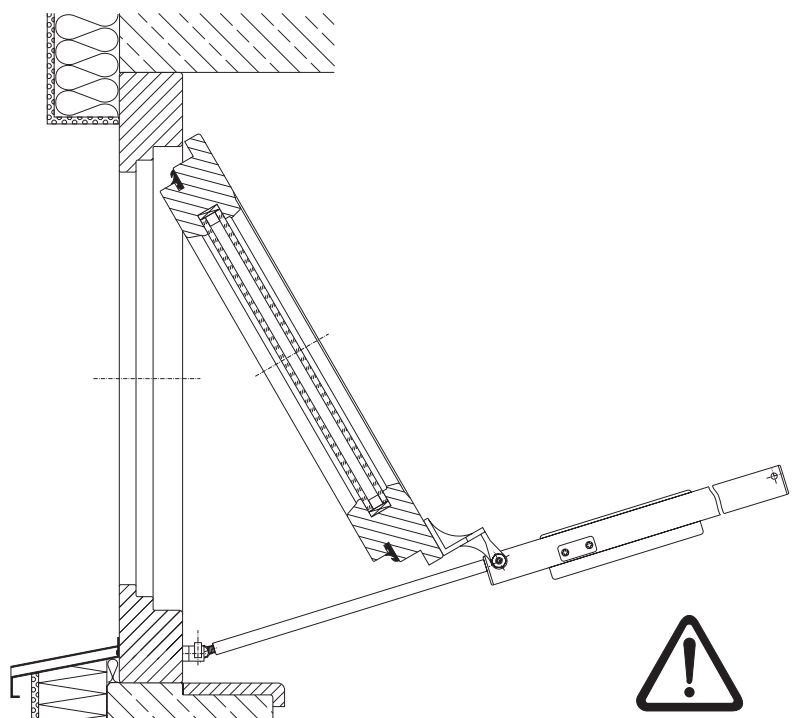
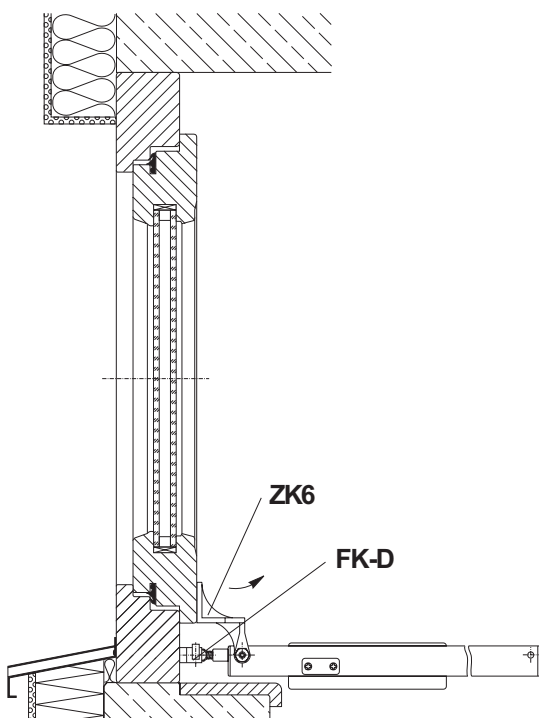
ZK6

Attention

Observe weight of window wing including glass!
(Glass of 1mm strength has a weight of 2,5kg/m²)

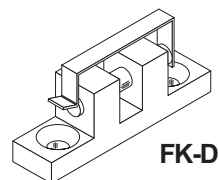
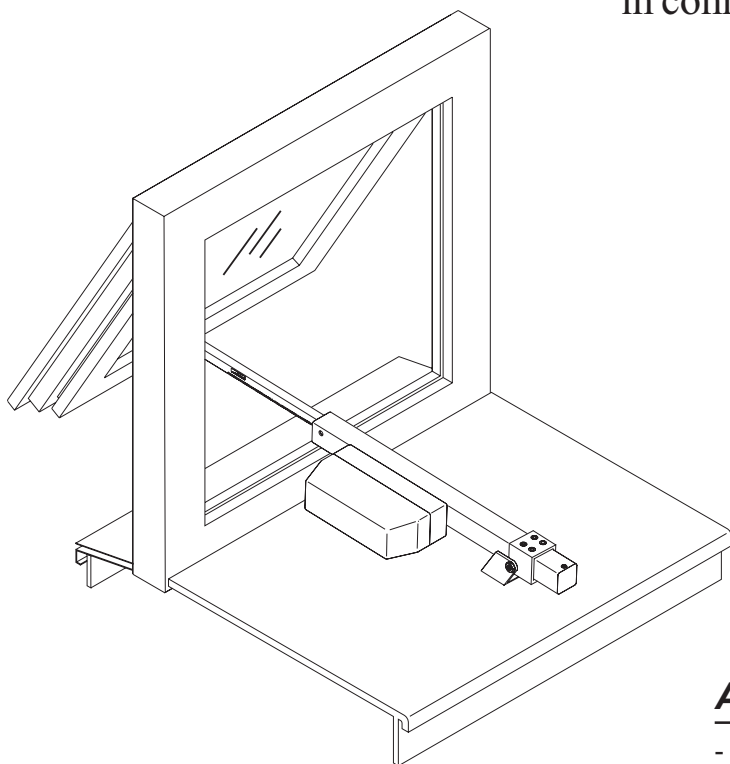
Top-hung sash closed

Top-hung sash open

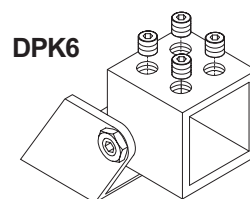


Rack and Pinion Drives on a Top-Hung Sash, opening outward

in connection with brackets DPK6 and FK-D



FK-D



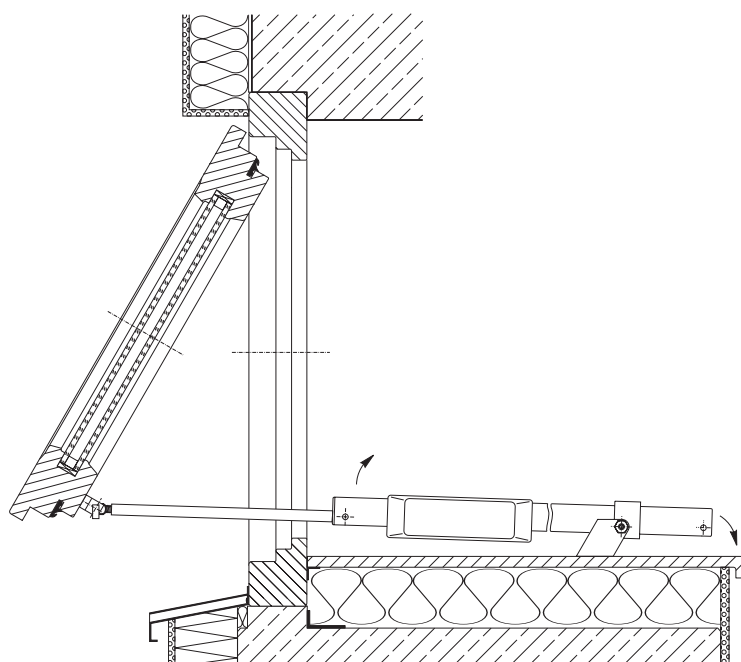
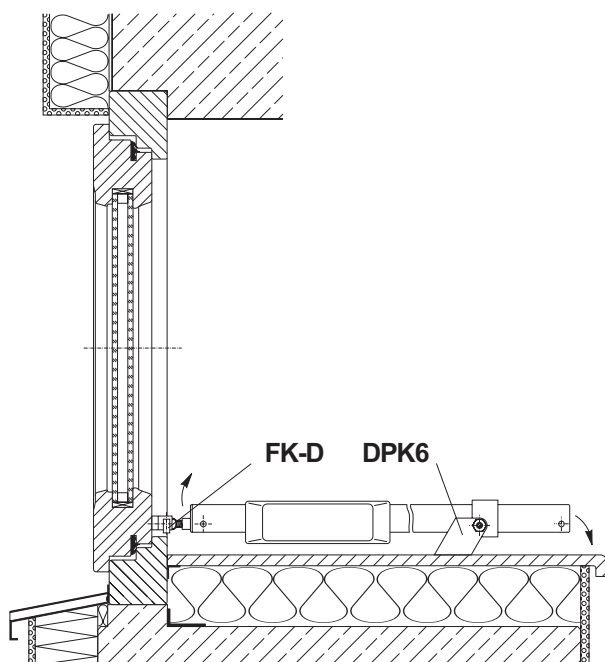
DPK6

Attention

- Observe weight of window wing including glass!
(Glass of 1mm strength has a weight of 2,5kg/m²)

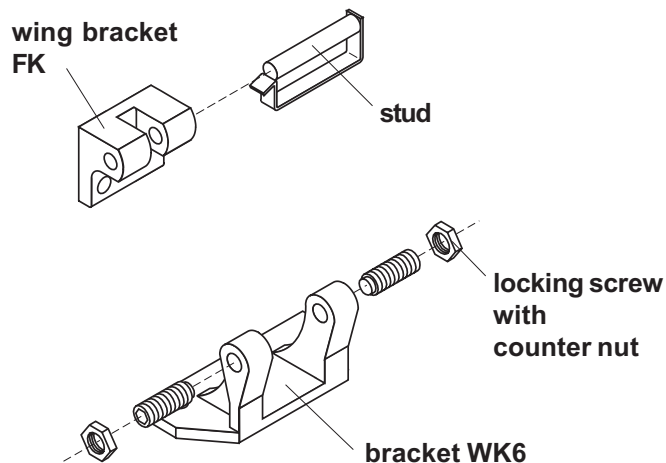
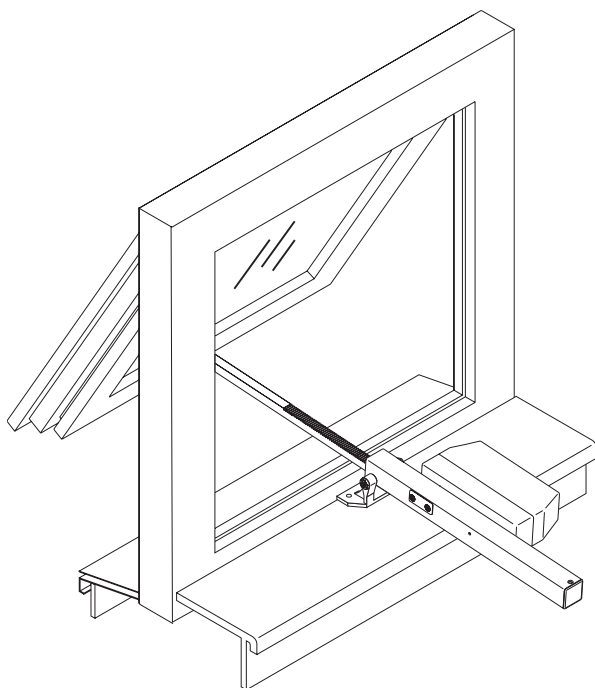
Top-hung sash, closed

Top-hung sash, open



Rack and Pinion Drives on a Top-Hung Sash, opening outward

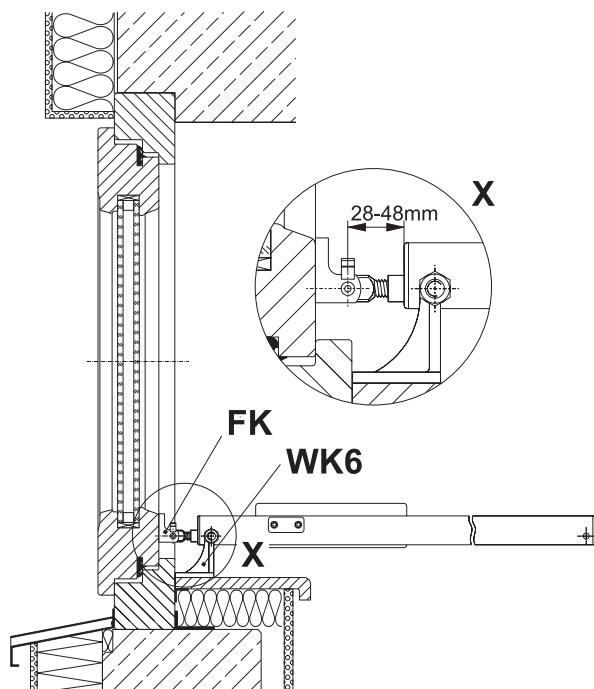
in connection with brackets WK6 and FK



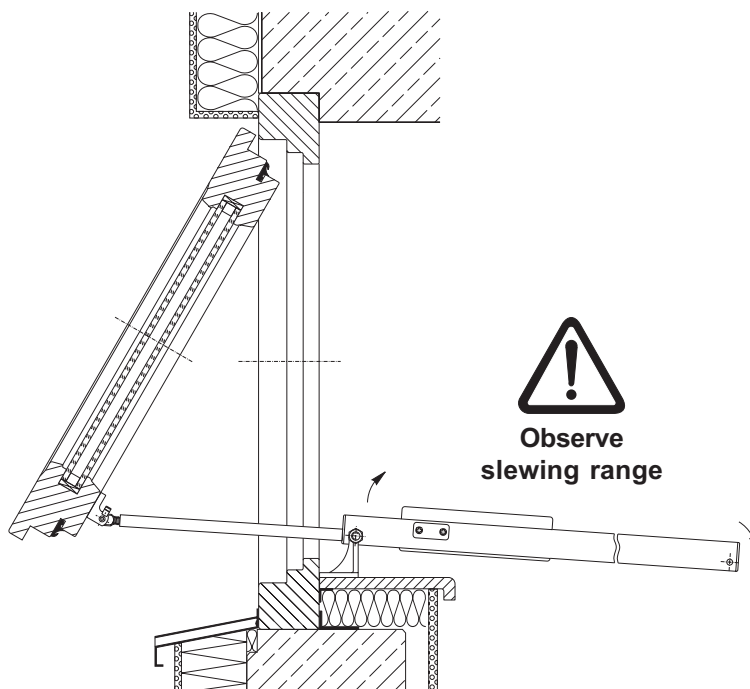
Attention

Observe weight of window wing including glass!
(Glass of 1mm strength has a weight of 2,5kg/m²)

Pivot-hung window closed

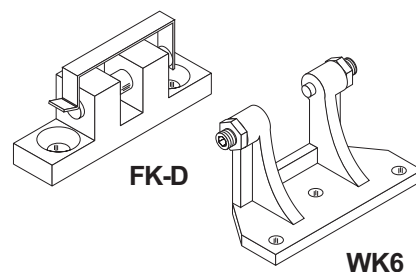
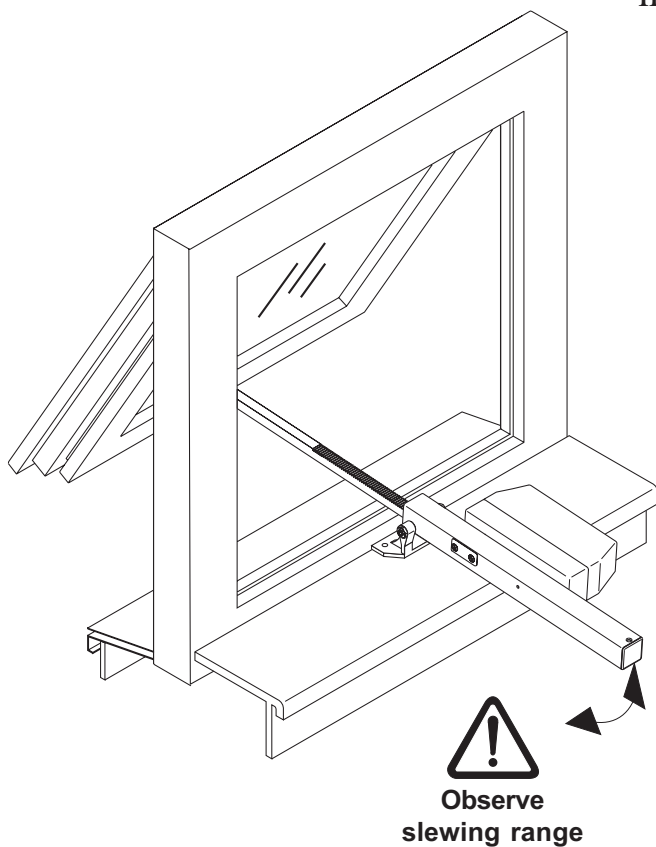


Pivot-hung window open



Rack and Pinion Drive on a Top-Hung Sash, opening outward

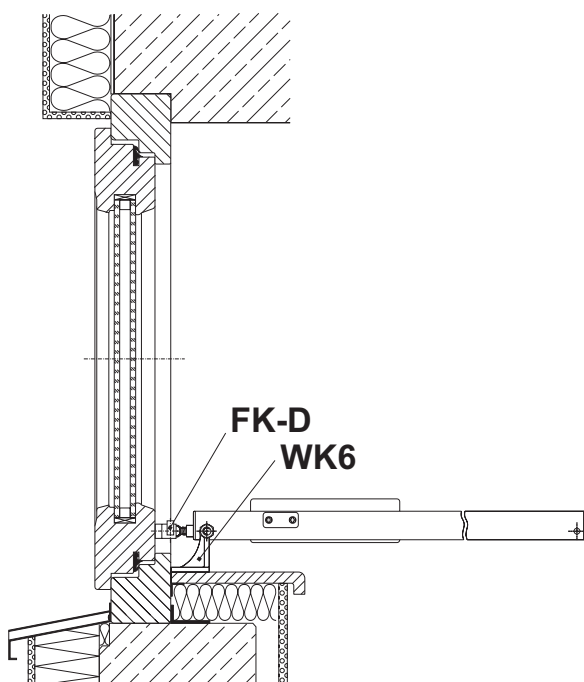
in connection with brackets WK6 and FK-D



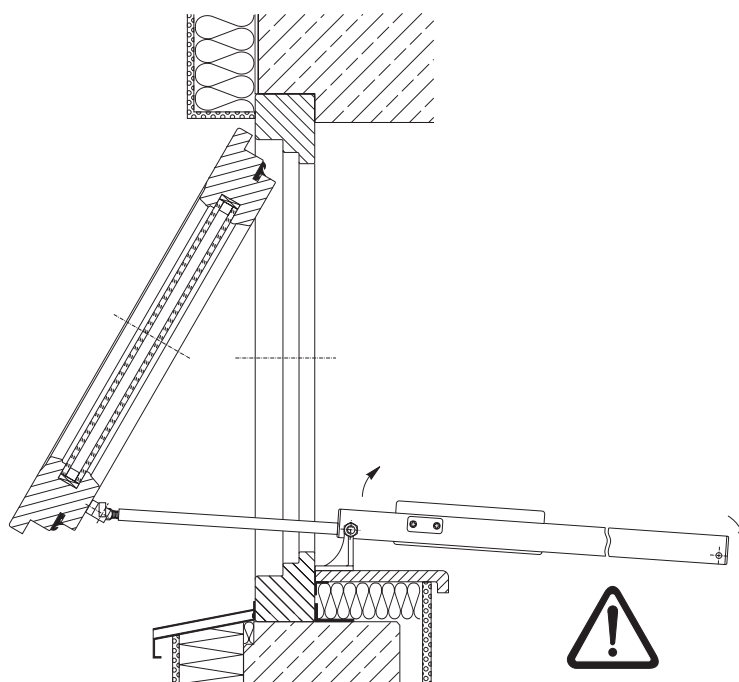
Attention

Observe weight of window wing including glass!
(Glass of 1mm strength has a weight of 2,5kg/m²)

Top-hung sash closed

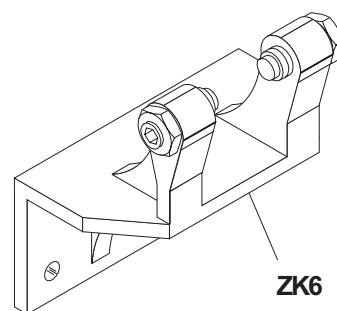
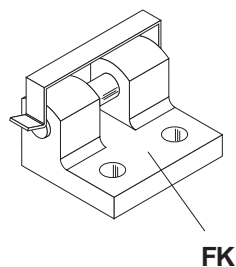
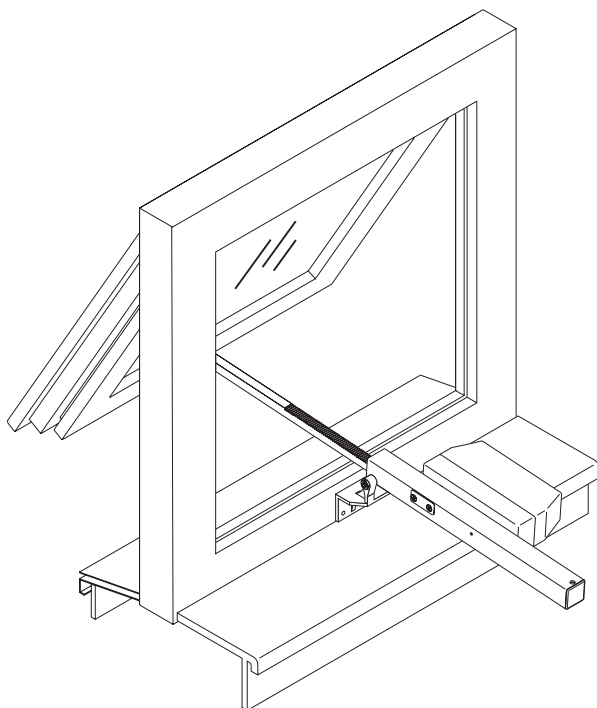


Top-hung sash open



Rack and Pinion Drives on a Top-Hung Sash, opening outward

in connection with bracket ZK6

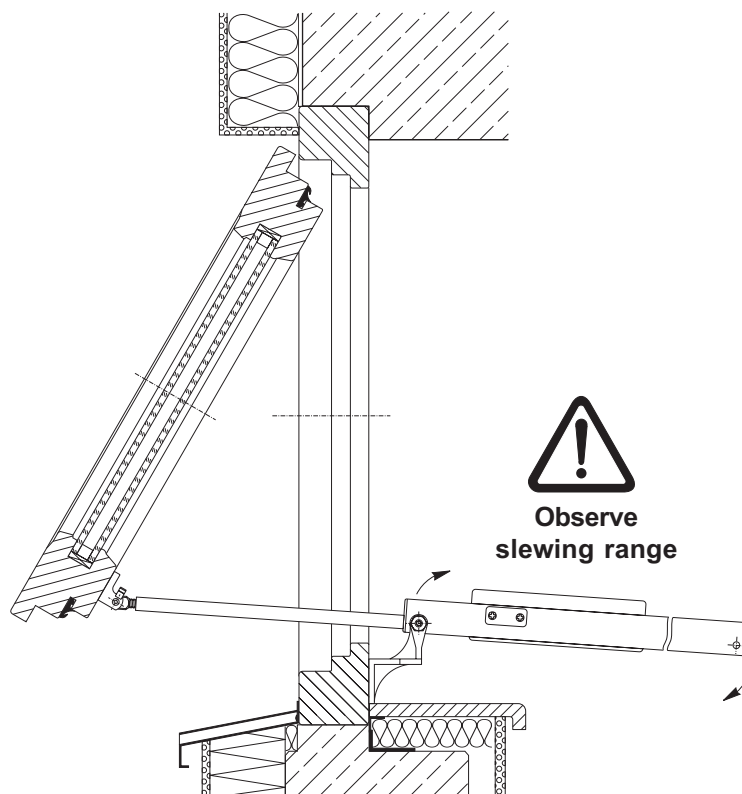
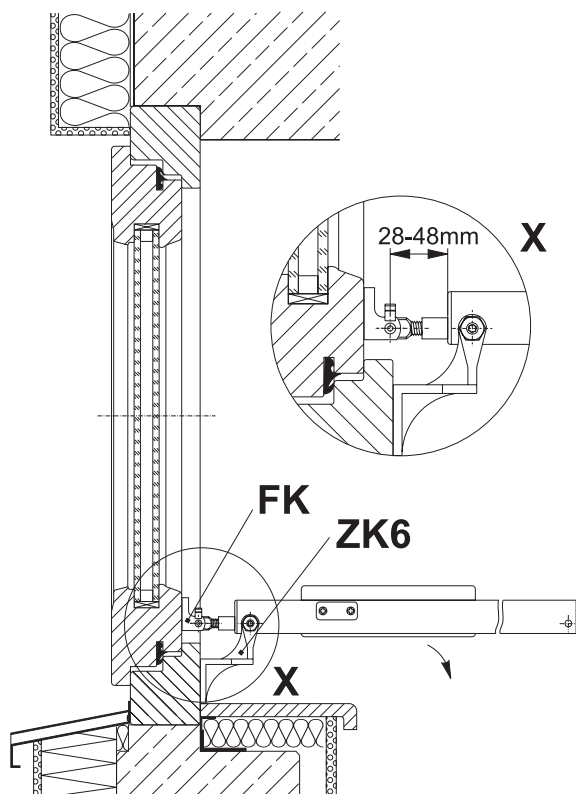


Attention

Observe weight of window wing including glass!
(Glass of 1mm strength has a weight of 2,5kg/m²)

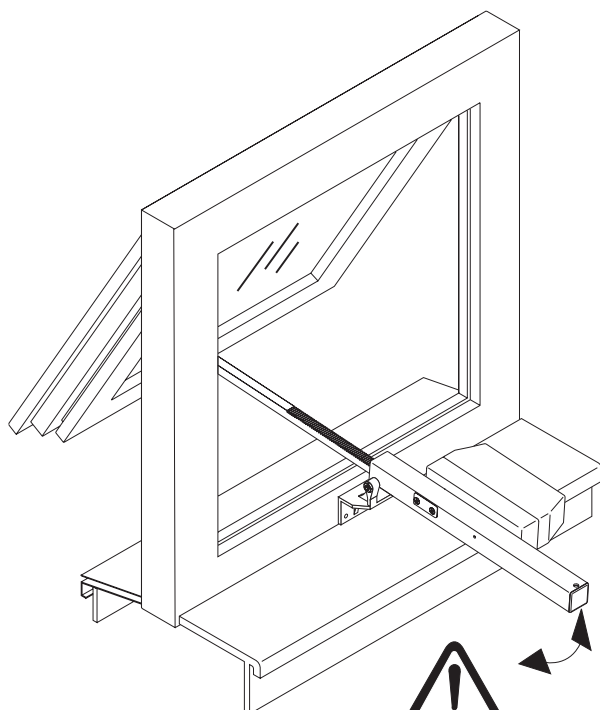
Pivot-hung window closed

Pivot-hung window open

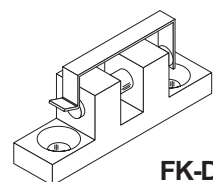


Rack and Pinion Drives on a Top-Hung Sash, opening outward

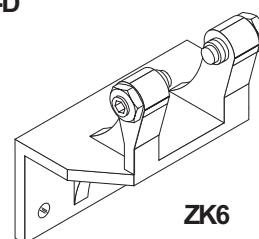
in connection with brackets ZK6 and FK-D



Observe
slewing range



FK-D

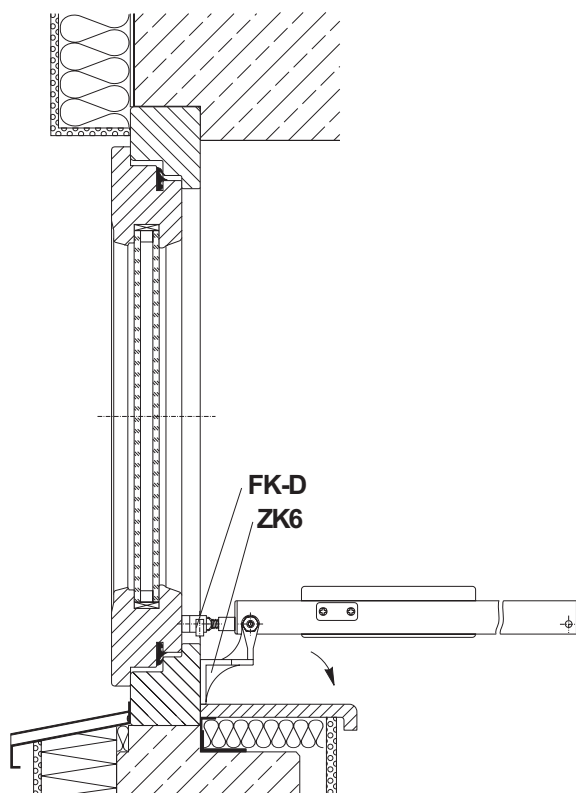


ZK6

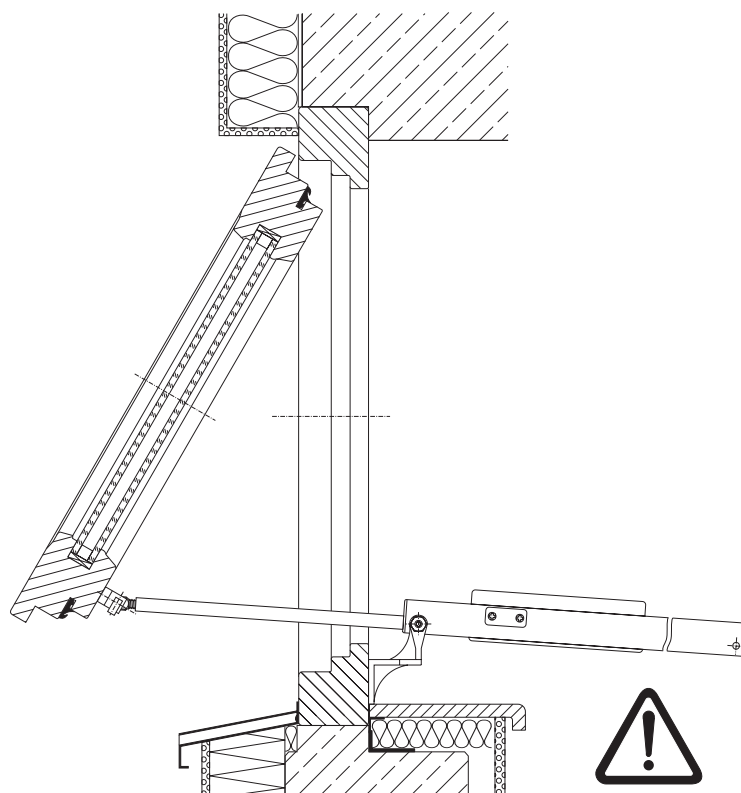
Attention

Observe weight of window wing including glass!
(Glass of 1mm strength has a weight of 2,5kg/m²)

Top-hung sash closed

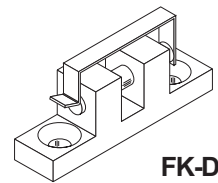
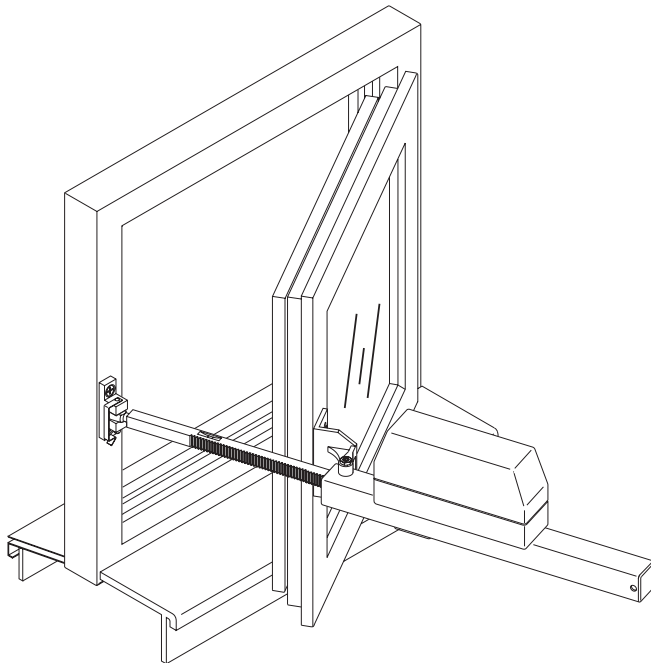


Top-hung sash open

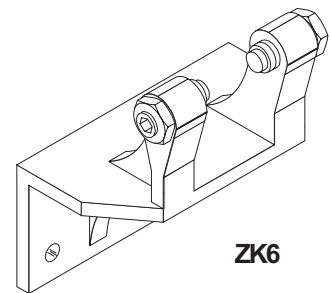


Rack and Pinion Drive on a Turning Sash, opening inward

in connection with brackets ZK6 and FK-D



FK-D

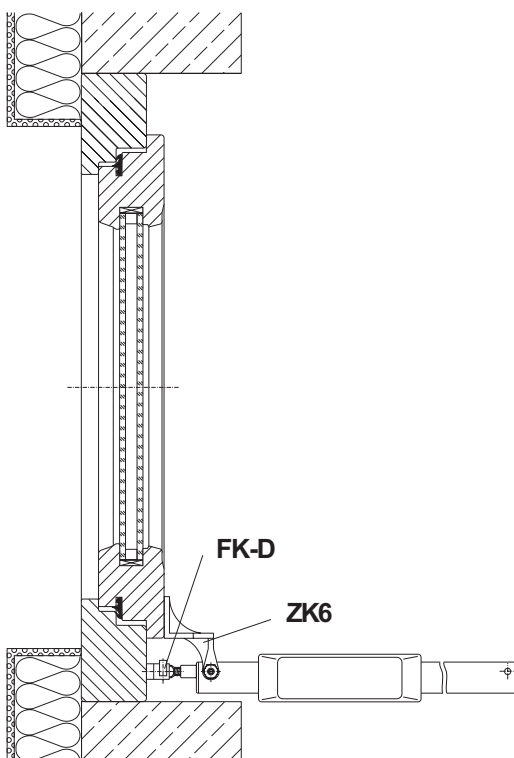


ZK6

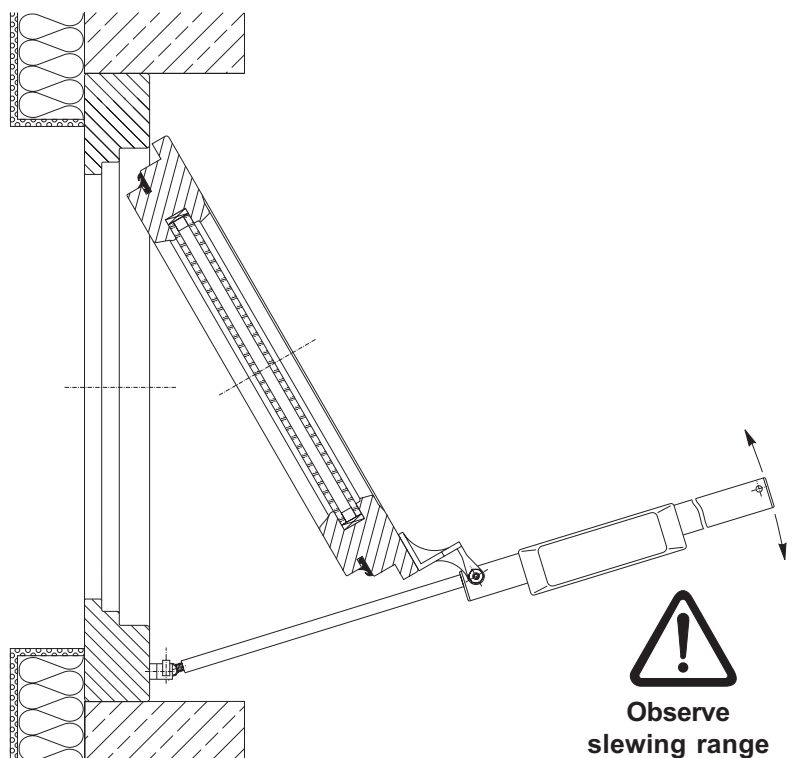
Attention

Observe weight of window wing including glass!
(Glass of 1mm strength has a weight of 2,5kg/m²)

Turning sash closed
(view from the top)



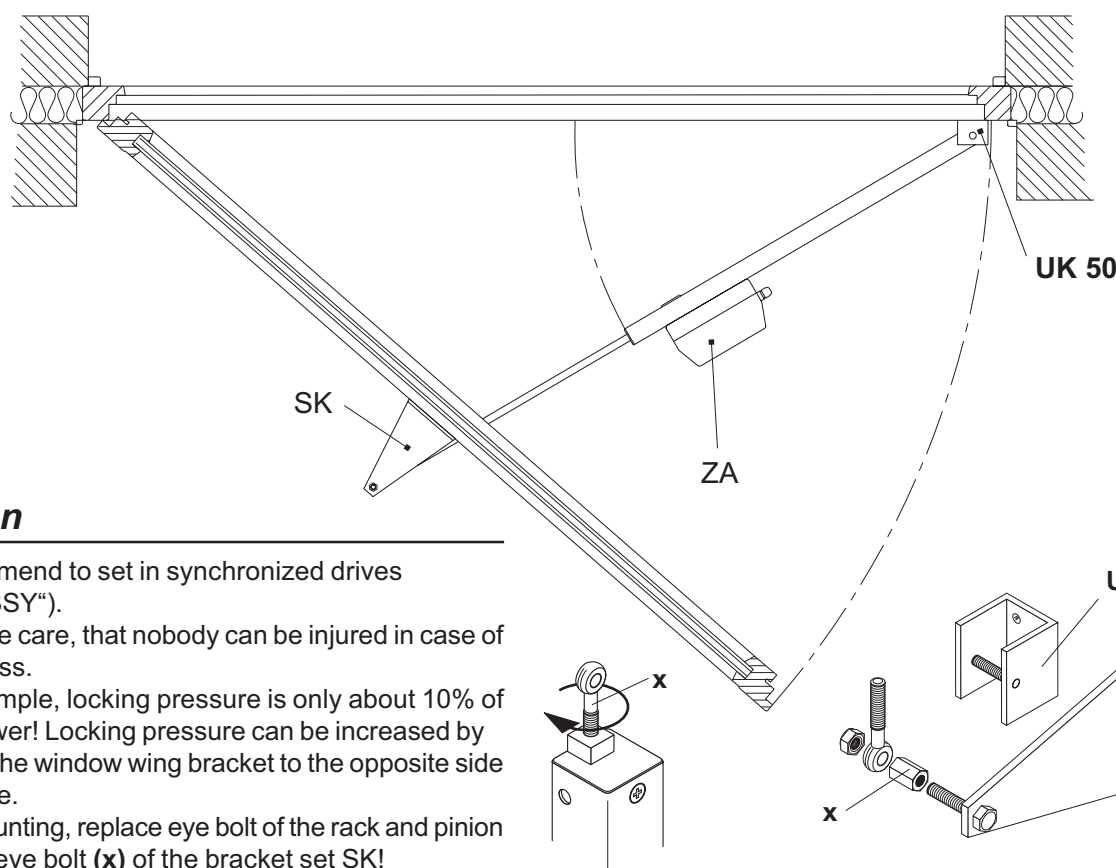
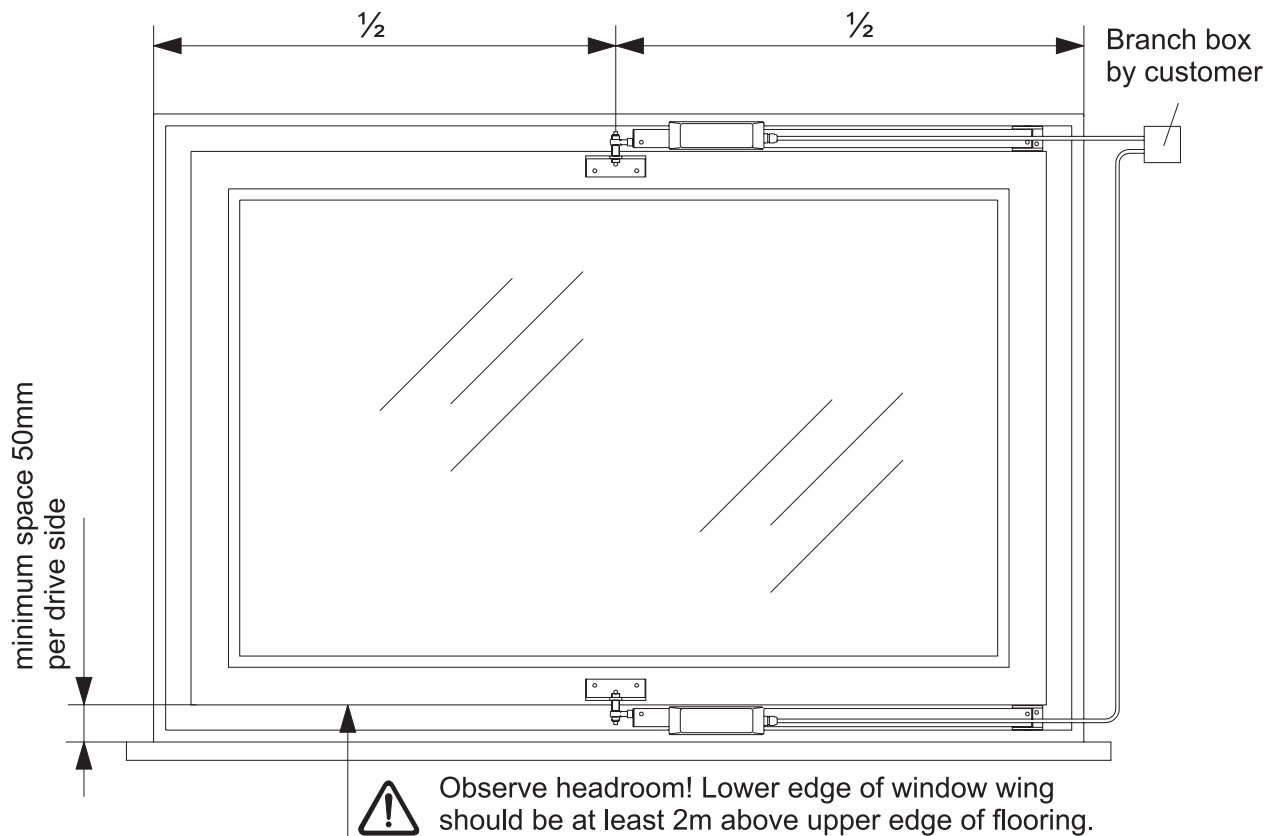
Turning sash opened
(view from the top)



**Observe
slewing range**

Rack and Pinion Drives on a Turning Sash opening inward

in connection with brackets SK und UK 50

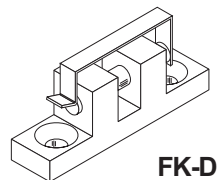
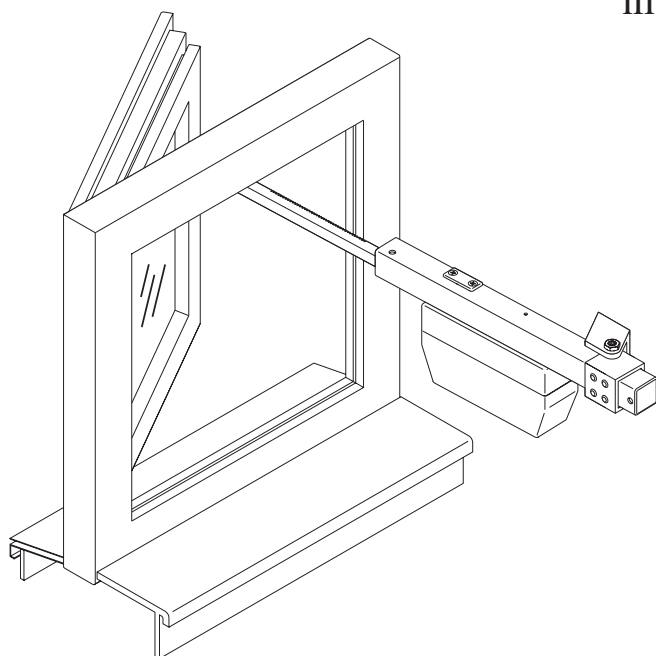


Attention

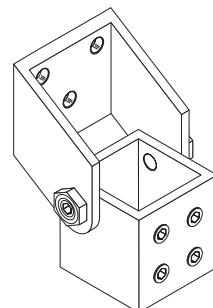
- We recommend to set in synchronized drives (Option „BSY“).
- Please take care, that nobody can be injured in case of broken glass.
- In this example, locking pressure is only about 10% of motive power! Locking pressure can be increased by shifting of the window wing bracket to the opposite side of the hinge.
- Before mounting, replace eye bolt of the rack and pinion drive with eye bolt (x) of the bracket set SK!

Rack and Pinion Drive on a Turning Sash, opening outward

in connection with brackets DPK6 and FK-D



FK-D

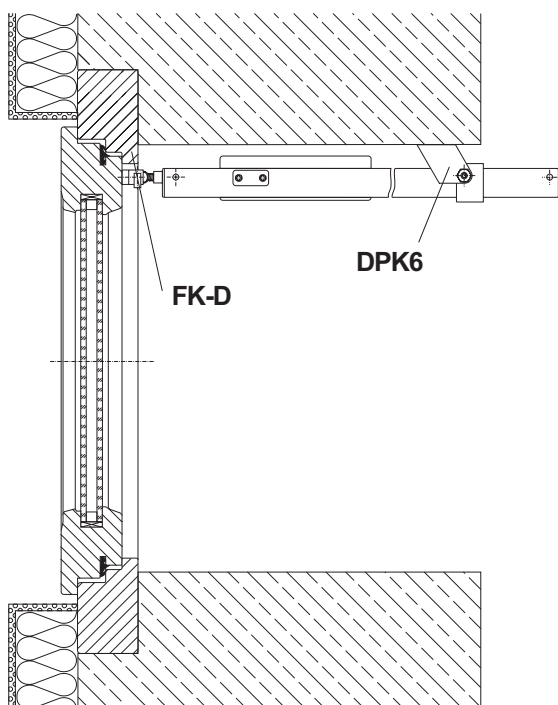


DPK6

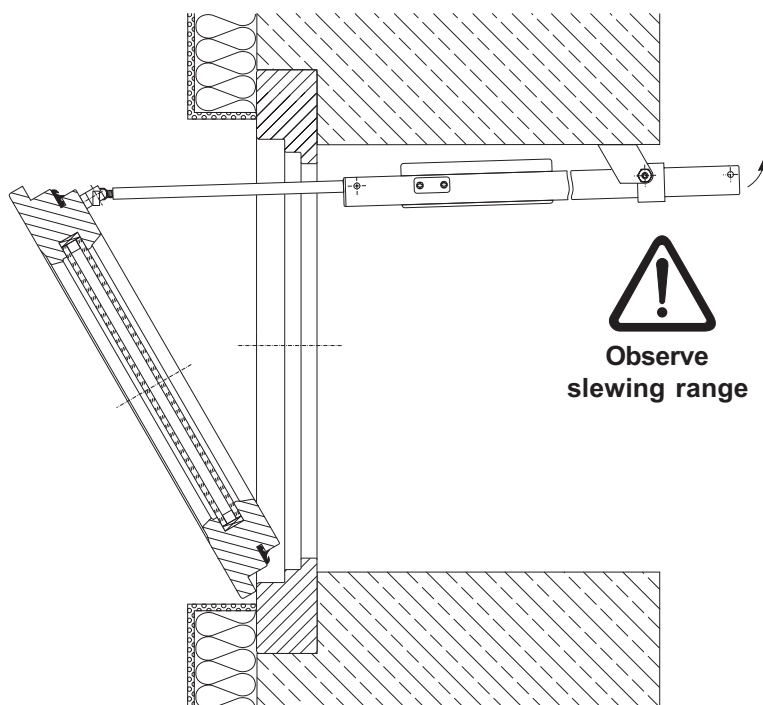
Attention

- Observe weight of window wing including glass!
(Glass of 1mm strength has a weight of 2,5kg/m²)

Turning sash closed
(view from the top)



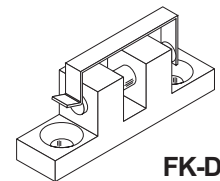
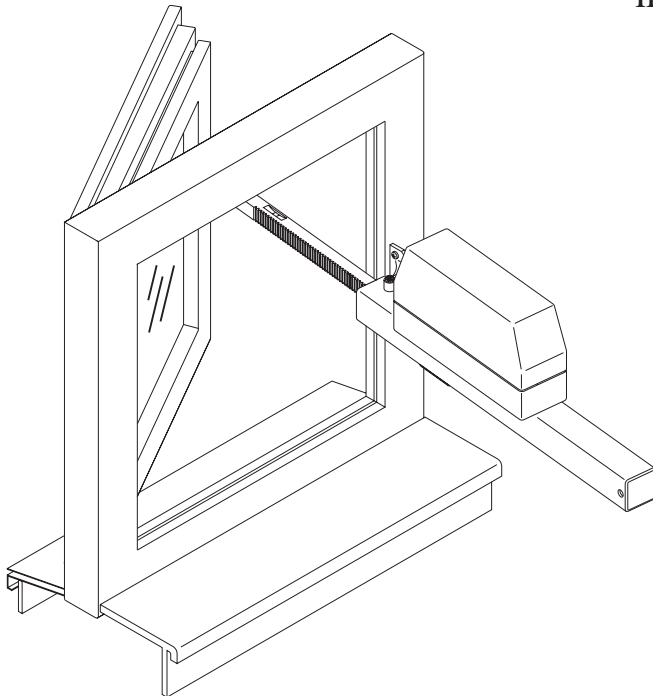
Turning sash closed
(view from the top)



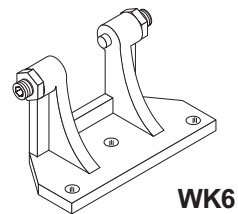

Observe
slewing range

Rack and Pinion Drive on a Turning Sash, opening outward

in connection with brackets WK6 and FK-D



FK-D

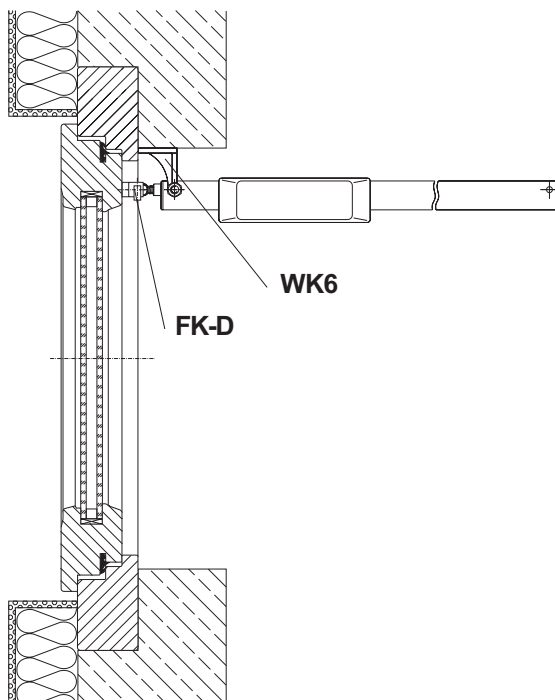


WK6

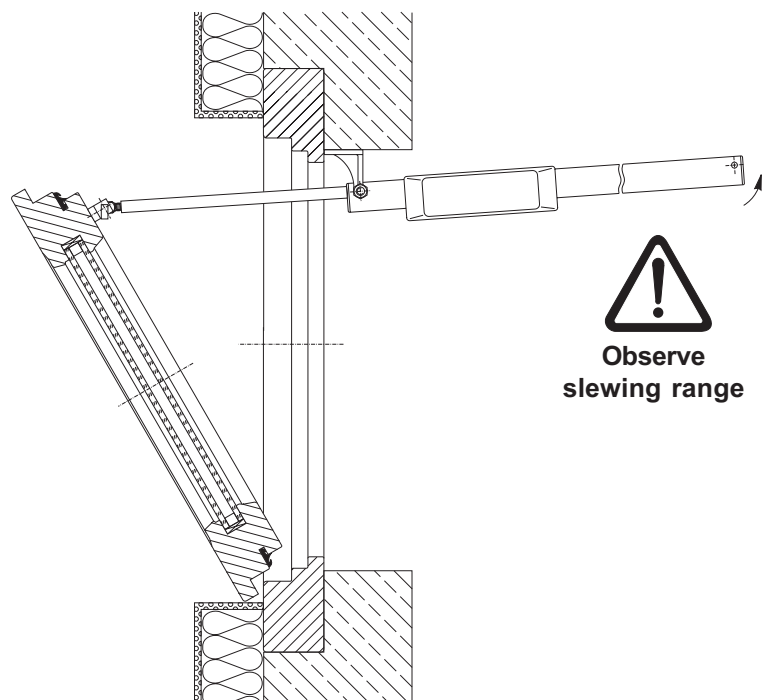
Attention

Observe weight of window wing including glass!
(Glass of 1mm strength has a weight of 2,5kg/m²)

Turning sash closed
(view from the top)



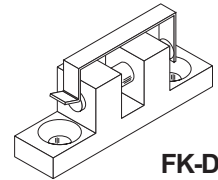
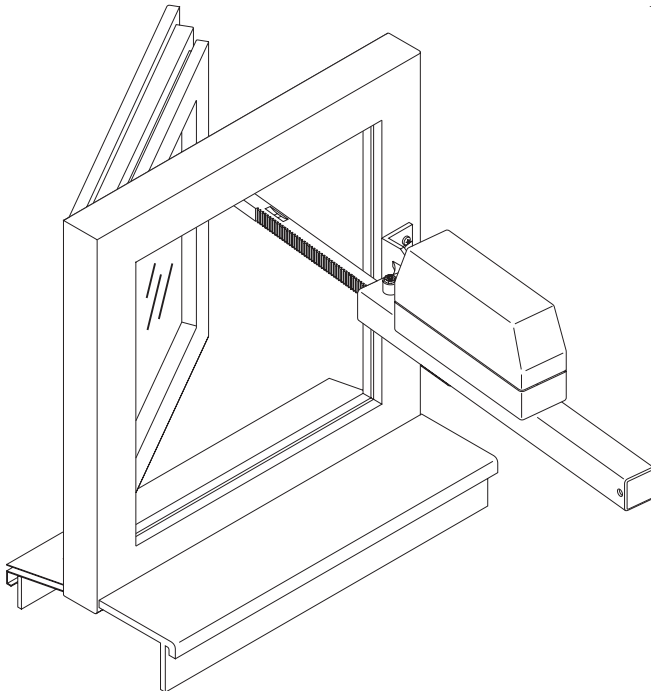
Turning sash opened
(view from the top)



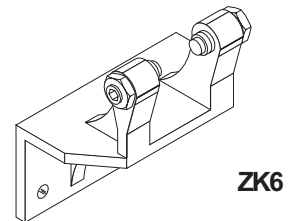
99,950,60 1.2./05/03

Rack and Pinion Drive on a Turning Sash, opening outward

in connection with brackets ZK6 and FK-D



FK-D

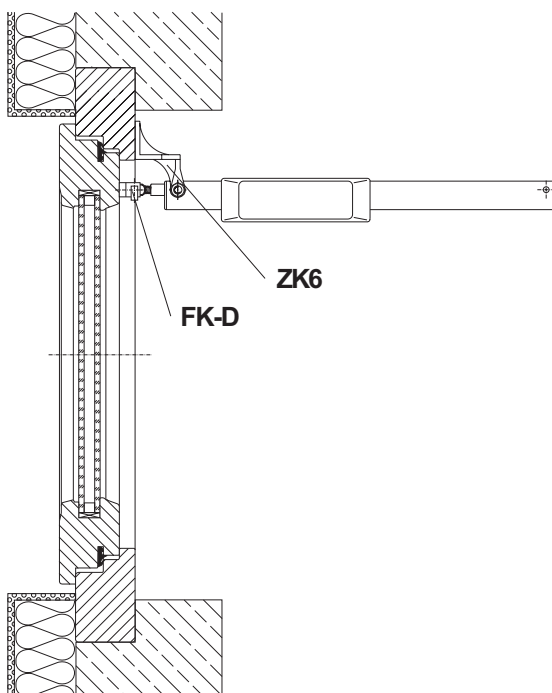


ZK6

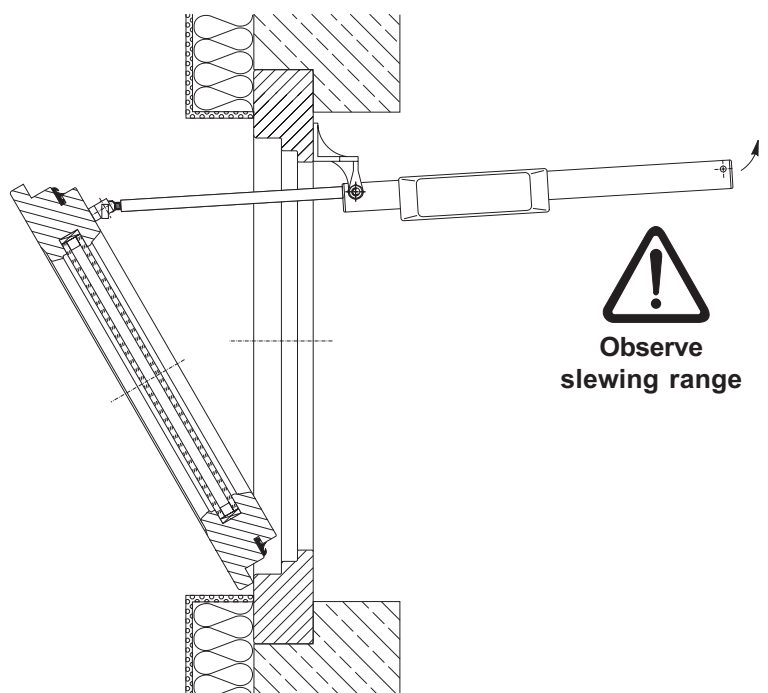
Attention

Observe weight of window wing including glass!
(Glass of 1mm strength has a weight of 2,5kg/m²)

Turning sash closed
(view from the top)



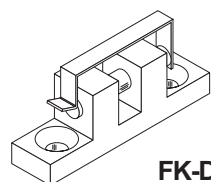
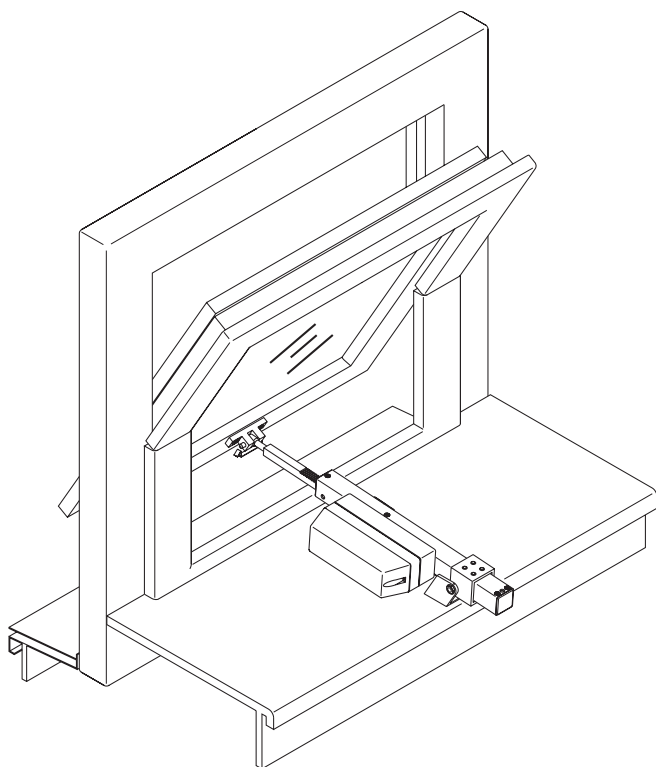
Turning sash closed
(view from the top)



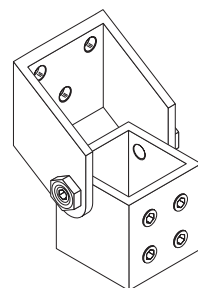
99.950.58 1.2/05/03

Rack and Pinion Drive on a Pivoting Window

in connection with brackets DPK6 and FK-D



FK-D

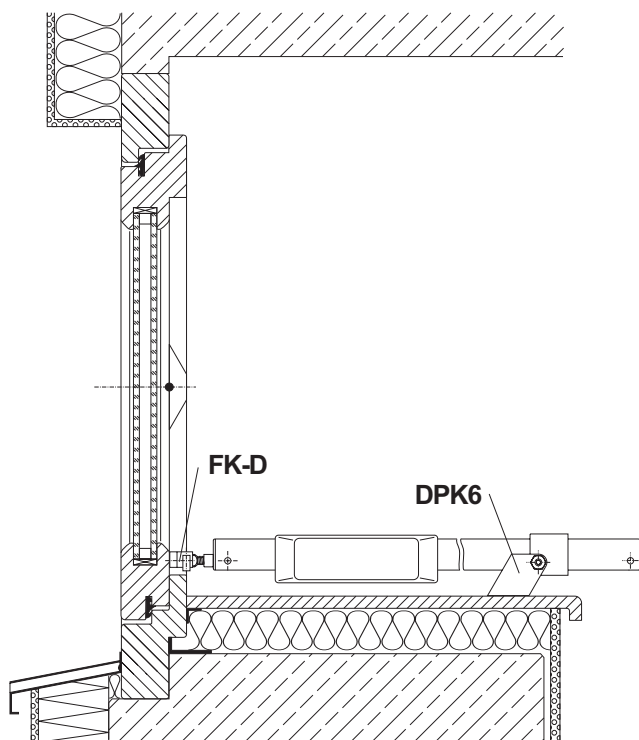


DPK6

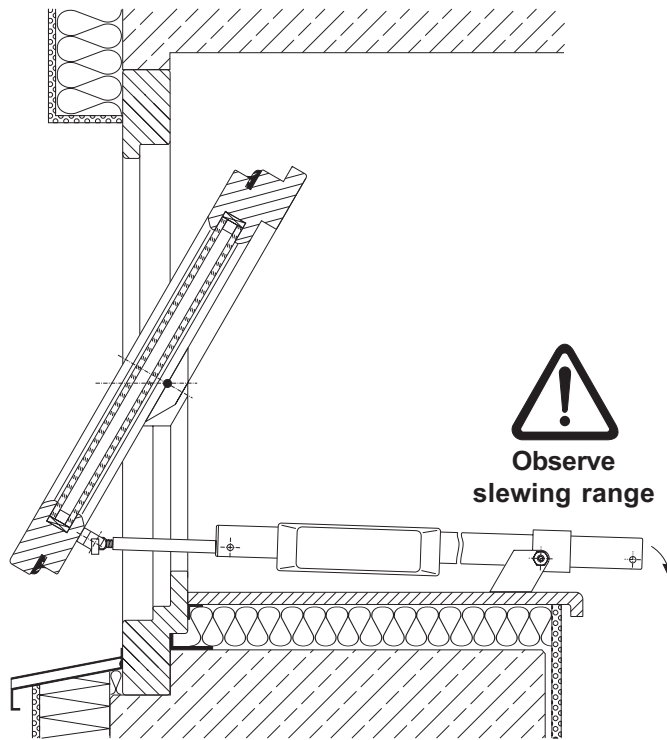
Attention

- Observe weight of window wing including glass!
(Glass of 1mm strength has a weight of 2,5kg/m²)

Pivoting window closed

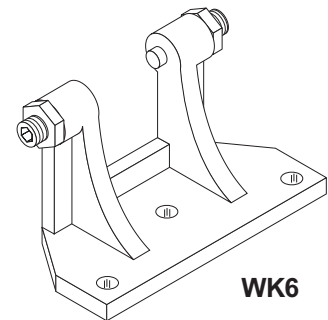
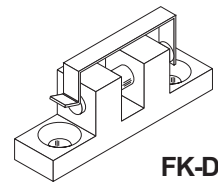
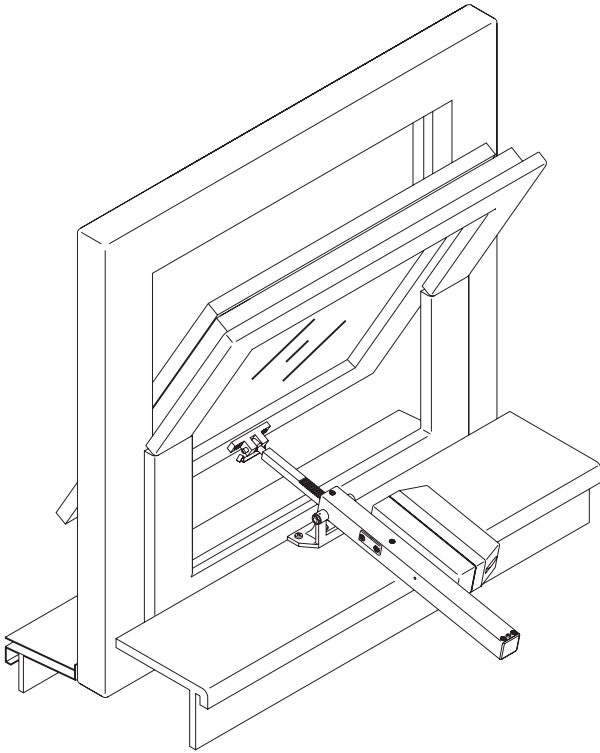


Pivoting window open



Rack and Pinion Drive on a Pivoting Window

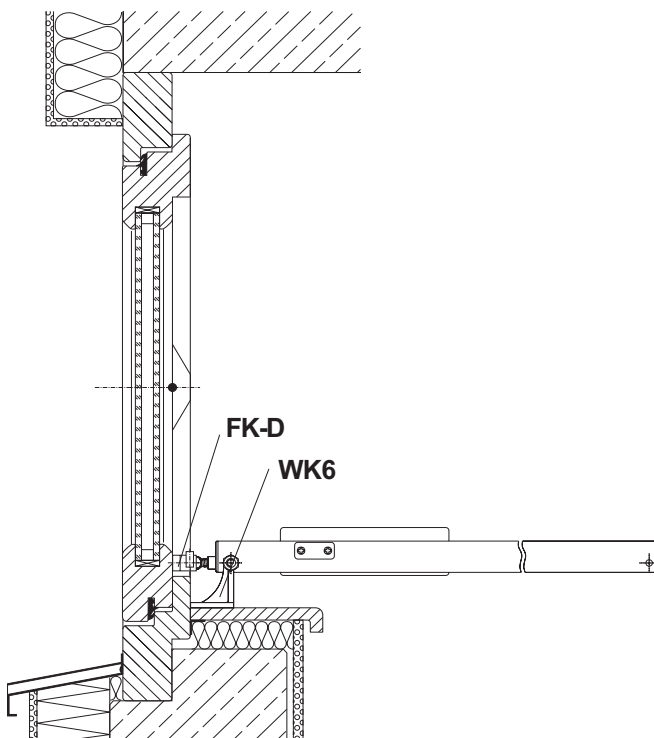
in connection with brackets WK6 and FK-D



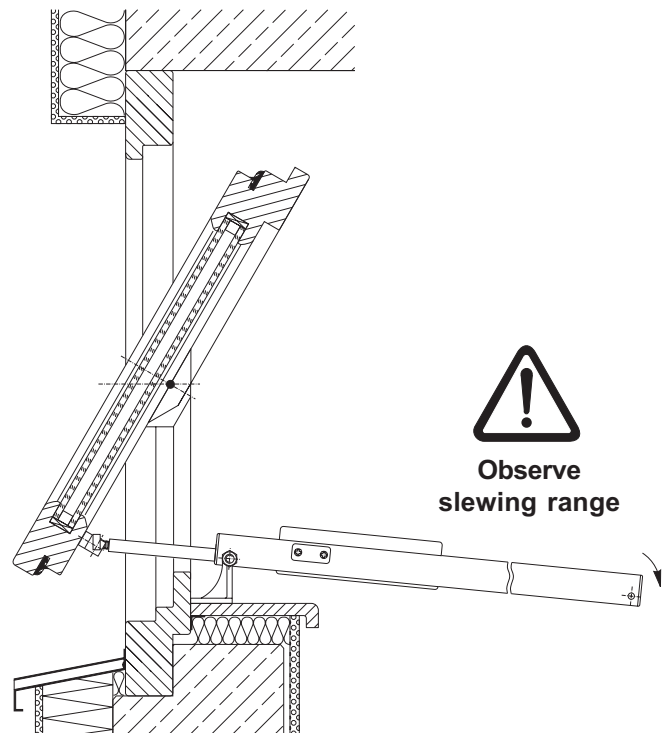
Attention

Observe weight of window wing including glass!
(Glass of 1mm strength has a weight of 2,5kg/m²)

Pivoting window closed

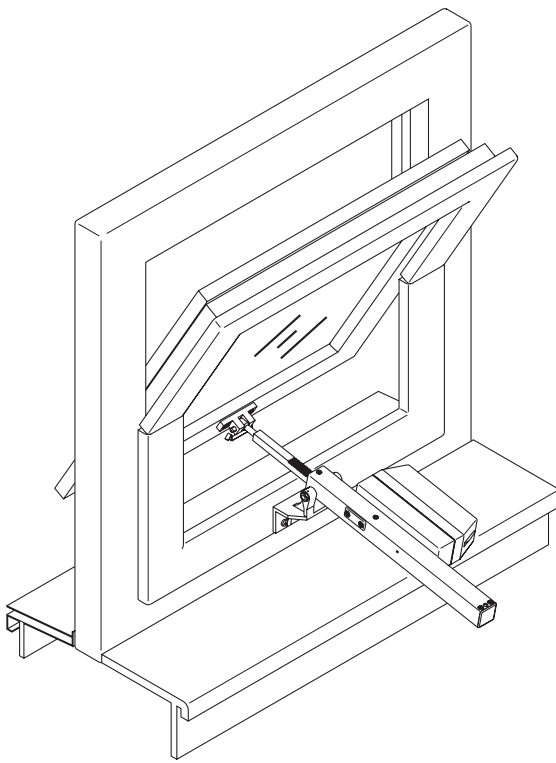


Pivoting window open

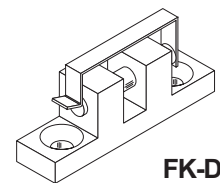


Rack and Pinion Drive on a Pivoting Window, (drive mounted on frame)

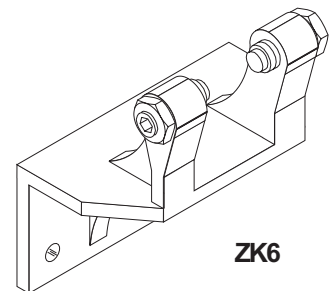
in connection with brackets ZK6 and FK-D



Pivoting window closed



FK-D

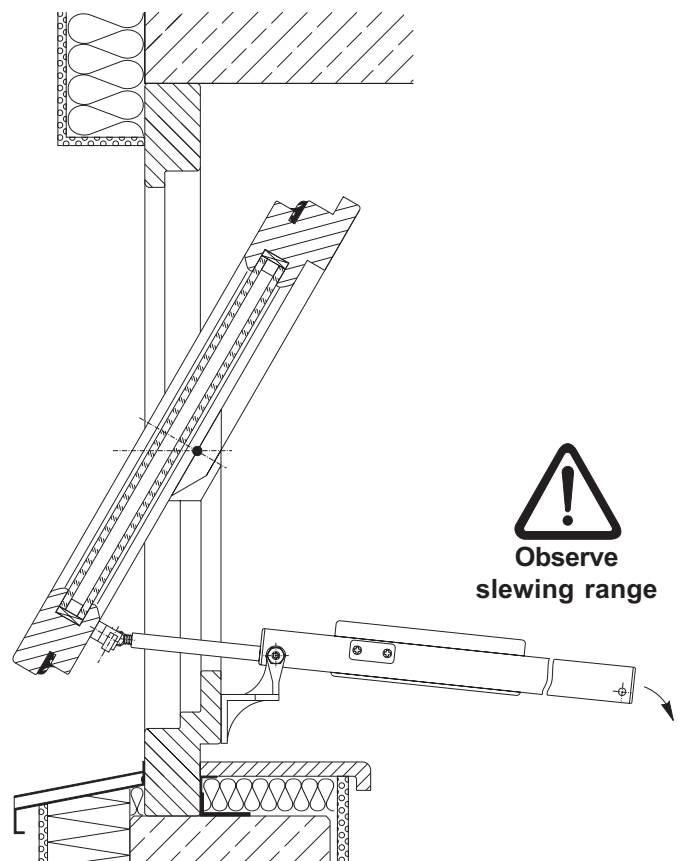
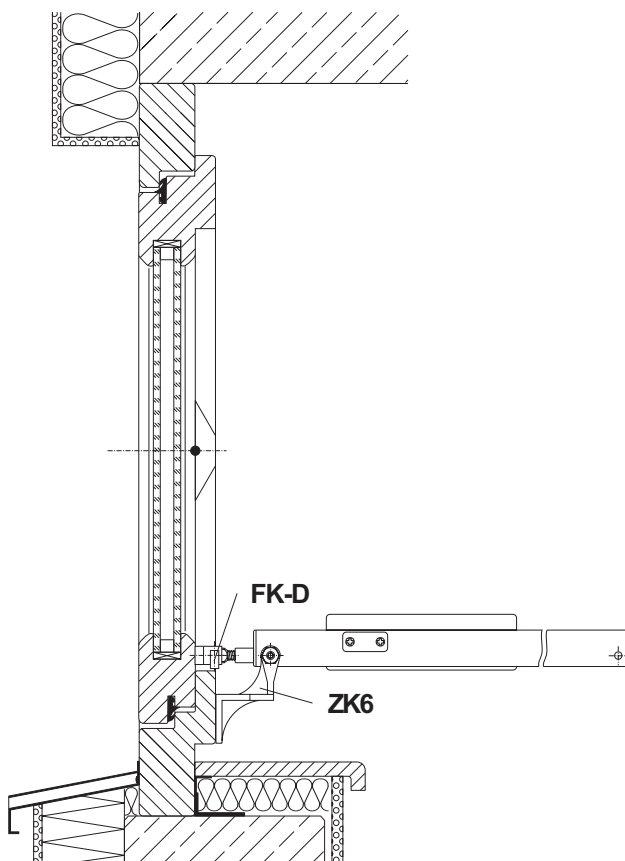


ZK6

Attention

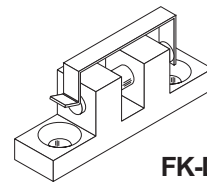
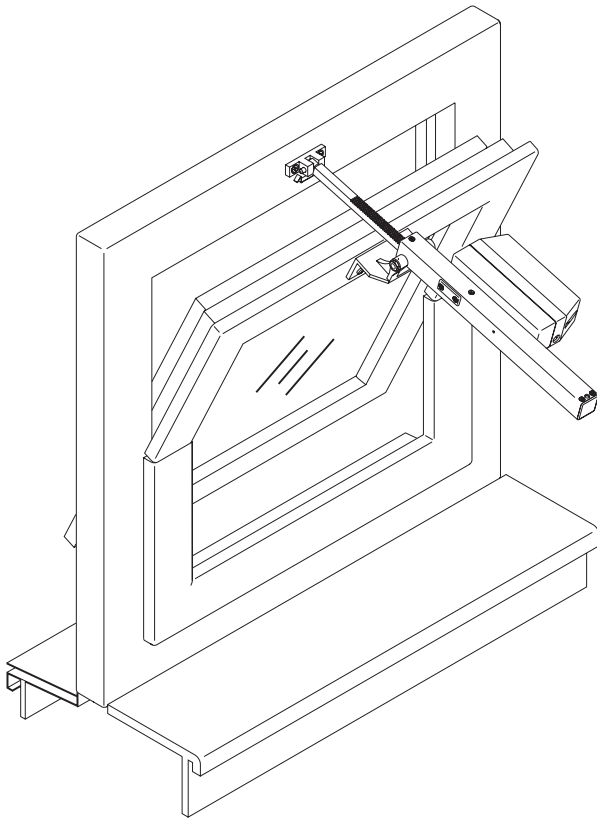
Observe weight of window wing including glass!
(Glass of 1mm strength has a weight of 2,5kg/m²)

Pivoting window open

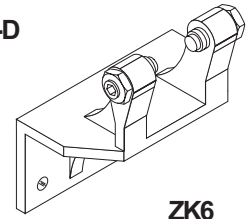


Rack and Pinion Drive on a Pivoting Window, (drive mounted on wing)

in connection with brackets ZK6 and FK-D



FK-D

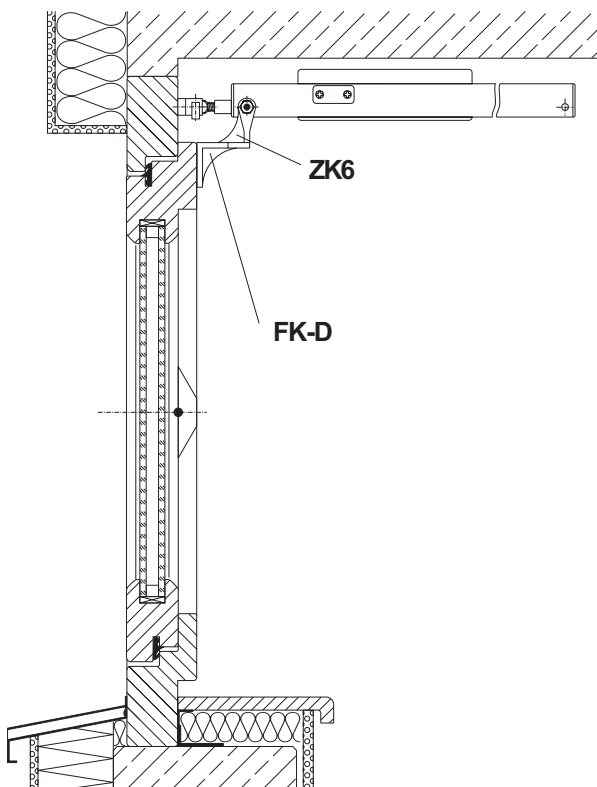


ZK6

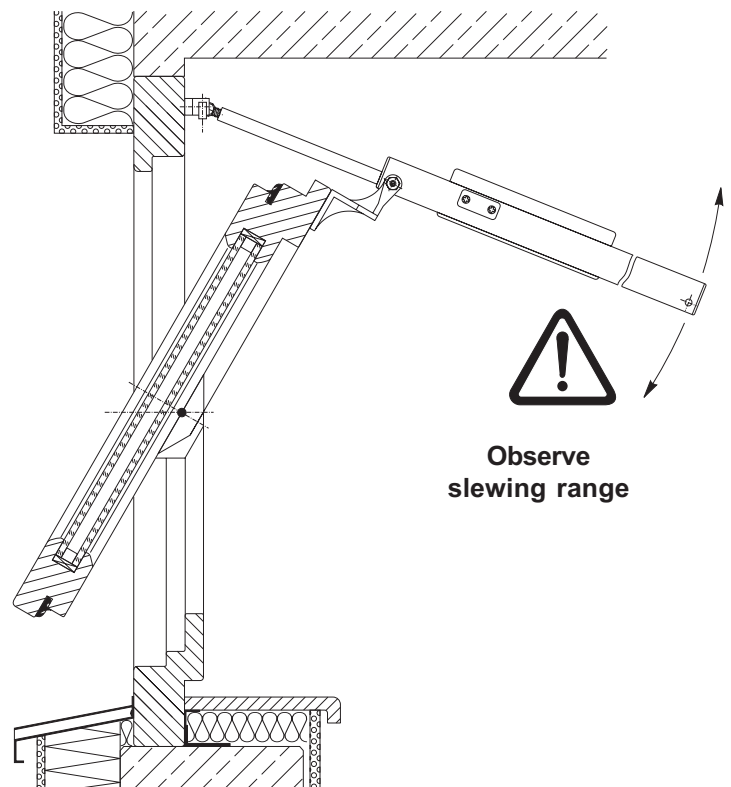
Attention

Observe weight of window wing including glass!
(Glass of 1mm strength has a weight of 2,5kg/m²)

Pivoting window closed



Pivoting window open



Observe
slewing range